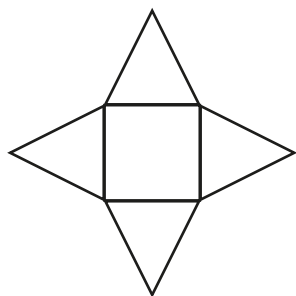


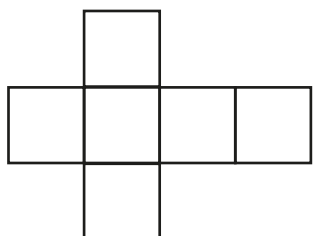
Reasoning about 3D shapes



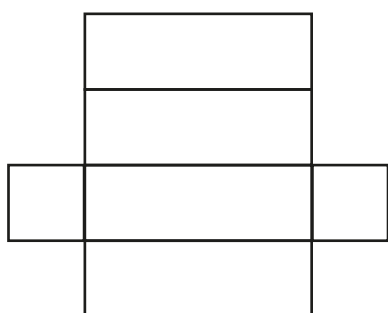
1 Match the net to the correct label.



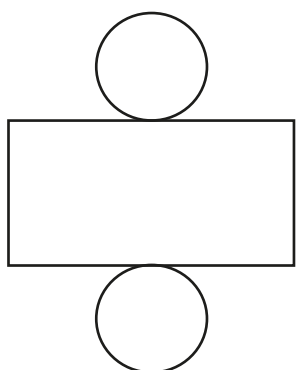
cube



cylinder



square-based
pyramid



cuboid

2 Complete the sentences.

a) The faces of a _____ are all square.

b) A square-based pyramid has triangular faces and square face.

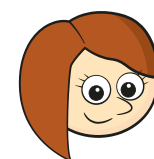
c) The net of a _____ is made up of 2 circles and a rectangle.

3



Whitney

The net of a cuboid is made up of 4 rectangles and 2 squares.



Rosie

The net of a cuboid is made up of 6 rectangles.

Who do you agree with? Circle your answer.

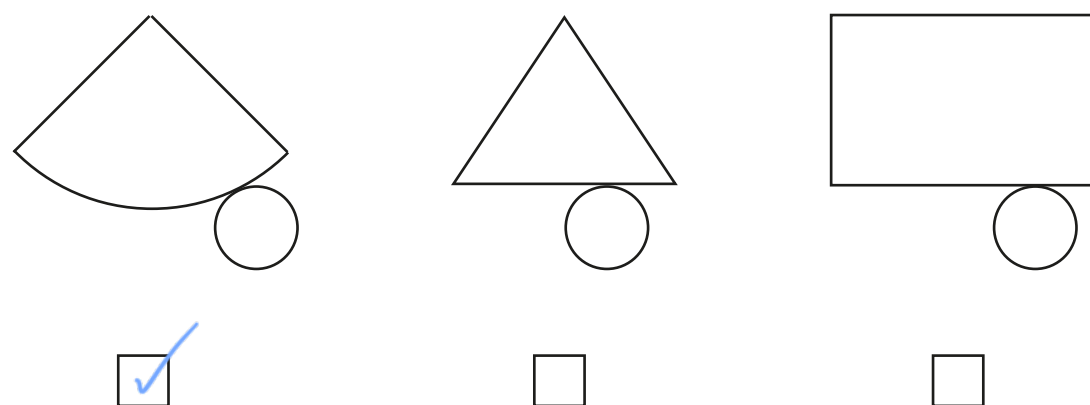
Whitney

Rosie

both of them

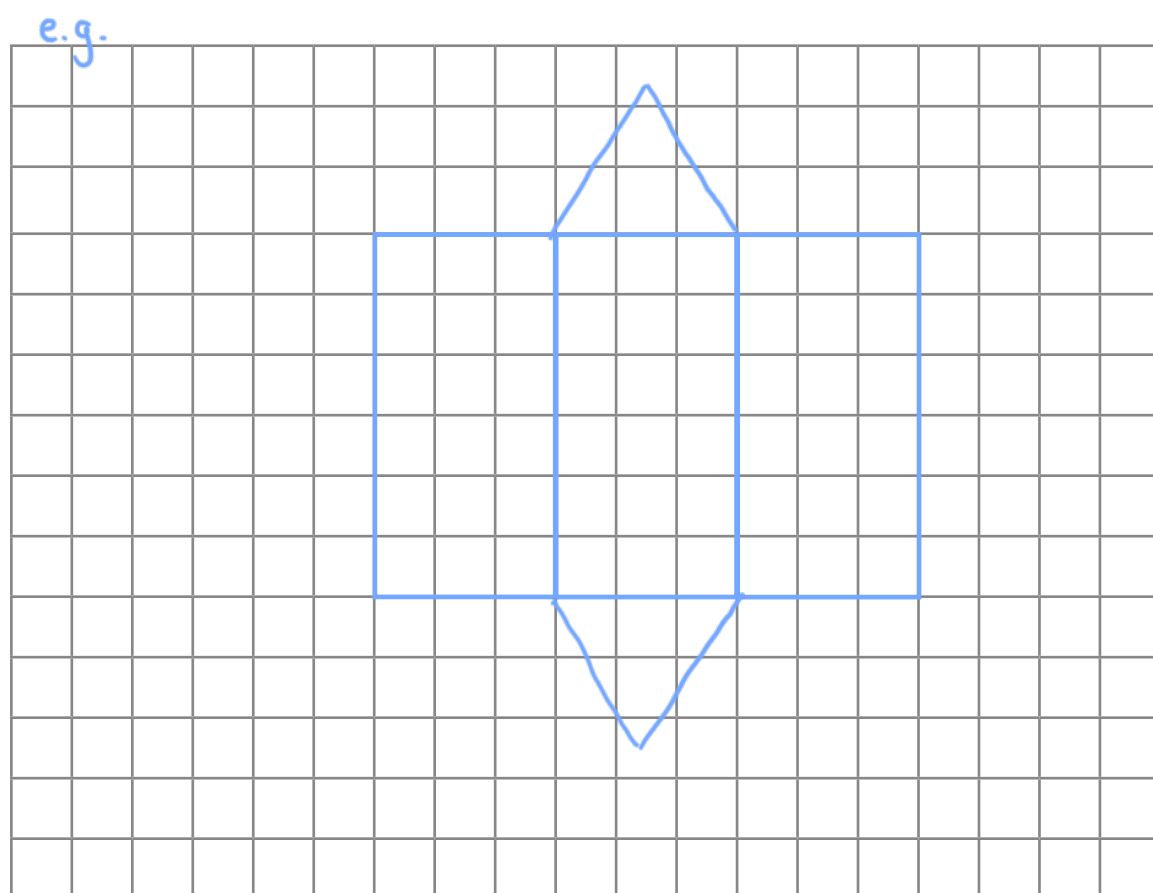
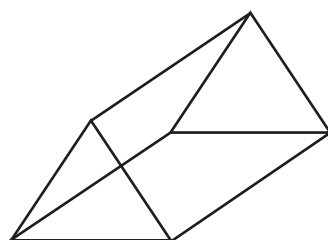
Explain your reasons.

- 4 Tick the diagram that is the net of a cone.

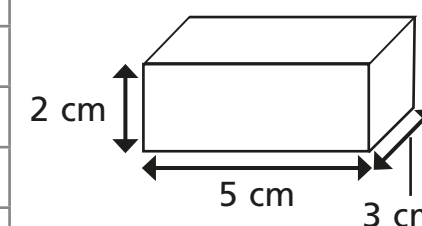
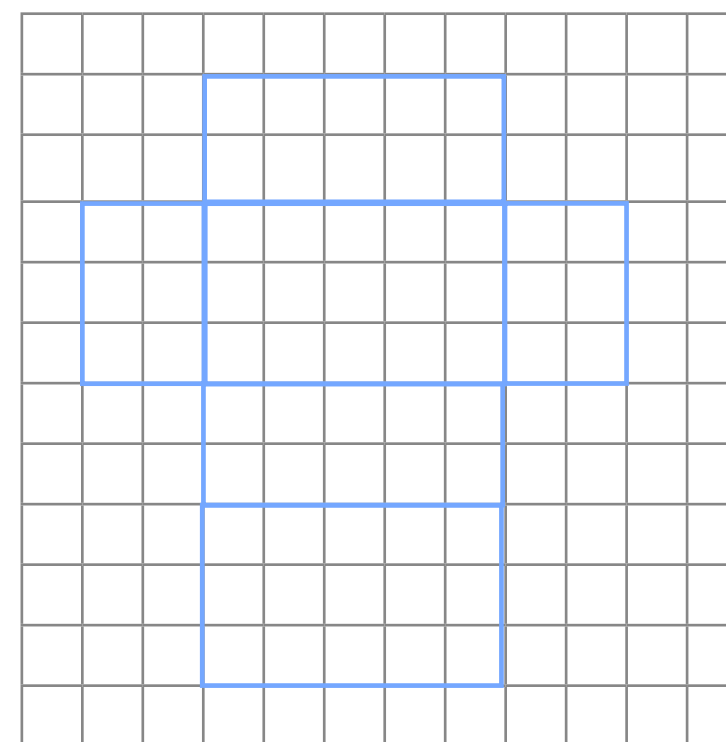


Compare answers with a partner.

- 5 Draw the net for a triangular prism on the squared grid.



- 6 Draw an **accurate** net for this cuboid on the squared grid.



- 7 Draw two different cuboids on the isometric paper.
e.g.

