

Kingswood 2021

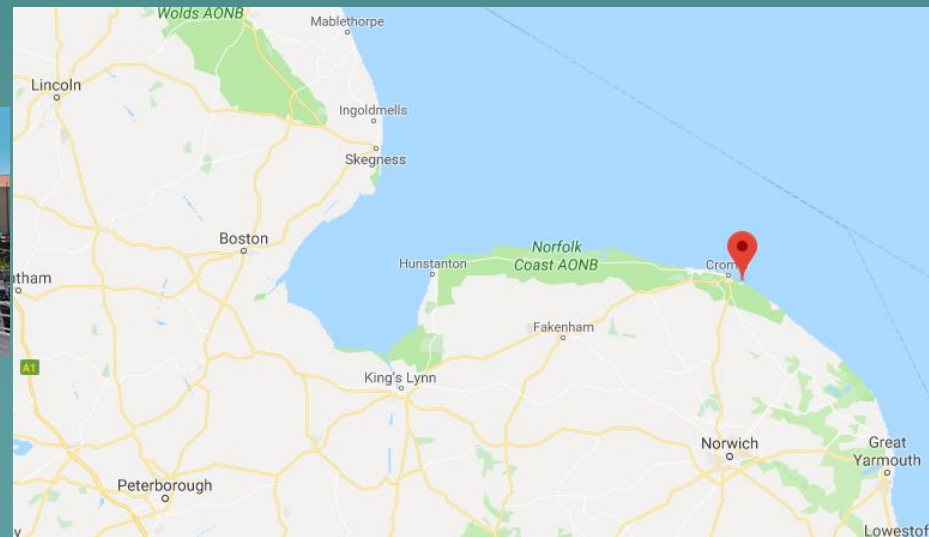


Overstrand Hall

Why do we go there?

- ◆ They are competitively priced for what they offer
- ◆ They are, in our considerable experience, very safe, with good quality instruction.
- ◆ They offer a range of physical pursuits, which are accessible to and enjoyable for all our children.
- ◆ They also offer access to an excellent range of information technology experiences during the week.
- ◆ The accommodation and food are of a high standard.
- ◆ Increased self- confidence and independence.
- ◆ All children have a great time.
- ◆ The week develops all aspects of the children – physical, organisational, social...

Where is it?



What is on offer?

- ◆ Archery
- ◆ Abseiling
- ◆ Laser Tag
- ◆ Low Ropes
- ◆ Leap of Faith
- ◆ Climbing
- ◆ Aero- Ball
- ◆ Nightline
- ◆ Fencing
- ◆ Exploring the Local Coastline and beaches
- ◆ Orienteering
- ◆ Field games
- ◆ Entertainments
- ◆ Initiative games
- ◆ Mission Possible
- ◆ Parachute Games
- ◆ Caving
- ◆ Circus Skills




Typical day


◆ A Sample Day at Kingswood

- ◆ 7.00a.m. Children gently wake up, shower etc.
- ◆ 8.00a.m. Breakfast
- ◆ 8.30a.m. Tidying rooms/ sorting personal equipment
- ◆ 9.00a.m. Morning meeting with Group Leader
- ◆ 9.15a.m. Session 1 e.g. LEAP OF FAITH
- ◆ 10.25a.m. Juice Break
- ◆ 10.40a.m. Session 2 e.g. LASER TAG
- ◆ 11.50a.m. Session 3 e.g. CLIMBING
- ◆ 1.00p.m. Lunch
- ◆ 2.00p.m. Afternoon meeting with Group Leader
- ◆ 2.15 p.m. Session 4 e.g. ORIENTEERING
- ◆ 3.25 p.m. Juice Break
- ◆ 3.40 p.m. Session 5 e.g. FENCING
- ◆ 4.50. p.m. Session 6 e.g. NIGHTLINE
- ◆ 6.00 p.m. Dinner
- ◆ 7.45 p.m. Evening Entertainment e.g. CAMP FIRE
- ◆ 9.00 p.m. Evening activities led by school staff – e.g. Team Sports
- ◆ 10.00 p.m. Children to bed
- ◆ 10.05 p.m. All children fast asleep!!!

Safety/ Quality of Instruction

- ◆ Risk assessments for every activity – available on website
www.kingswood.co.uk
 - ◆ Instructors all very capable and well trained – specific qualifications
 - ◆ Well maintained and rigorously checked equipment
 - ◆ Excellent adult/ pupil ratios
 - ◆ On site security measures 24 hours
 - ◆ Thorough first aid facilities
- 
- A stylized, dark teal silhouette of a mountain range is positioned in the bottom right corner of the slide, partially overlapping the bottom edge of the text area.

When do we plan to go?

- ◆ **Monday 14th June, 2021 to Friday 18th June, 2021**
 - ◆ **ARRANGEMENTS:** Children leave Nettleham on Monday lunchtime
 - ◆ Return to school by about tea time on Friday
- 
- A stylized, dark teal silhouette of a mountain range is positioned in the bottom right corner of the slide, extending from the right edge towards the center.

Payment Schedule


- ◆ **COSTS:**
- ◆ **BASIC HOLIDAY COST: £371**
- ◆ **ADDITIONAL COST OF TRANSPORT TO AND FROM THE CENTRE: @£25**

- ◆ **METHOD OF PAYMENT:**
- ◆ £40 before 19th October 2020 – non refundable. This secures the place.
- ◆ £55 by 31st January 2021– refundable
- ◆ £276 by 29th March 2021 – refundable providing we cancel more than 56 days before arrival (16th April 2021)
- ◆ **All payments via Wisepay please.**

enquiries@nettleham-junior.lincs.sch.uk

So why go?

A lovely centre in an area that allows the children to discover:

- ◆ New opportunities and activities
 - ◆ The natural world
 - ◆ New talents
 - ◆ Hidden reserves
 - ◆ That they can eat anything put in front of them...and find it delicious!
 - ◆ And much, much more.
- 
- A stylized, dark teal silhouette of a mountain range is positioned in the bottom right corner of the slide, partially overlapping the text area.