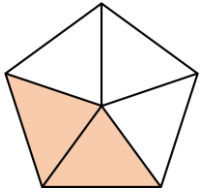


Year 4

Fractions

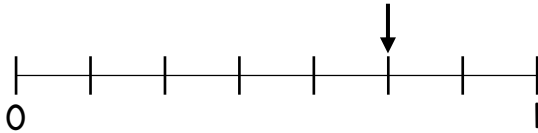
Name _____

1 What fraction of the shape is shaded?



1 mark

What fraction is the arrow pointing to?



1 mark

2 What is $\frac{2}{q} + \frac{5}{q}$?

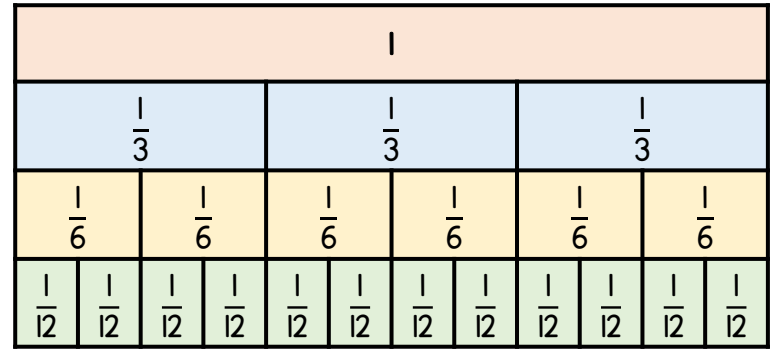
Use the fraction strip to help you.



1 mark

3 Complete the equivalent fractions.

Use the fraction wall to help you.

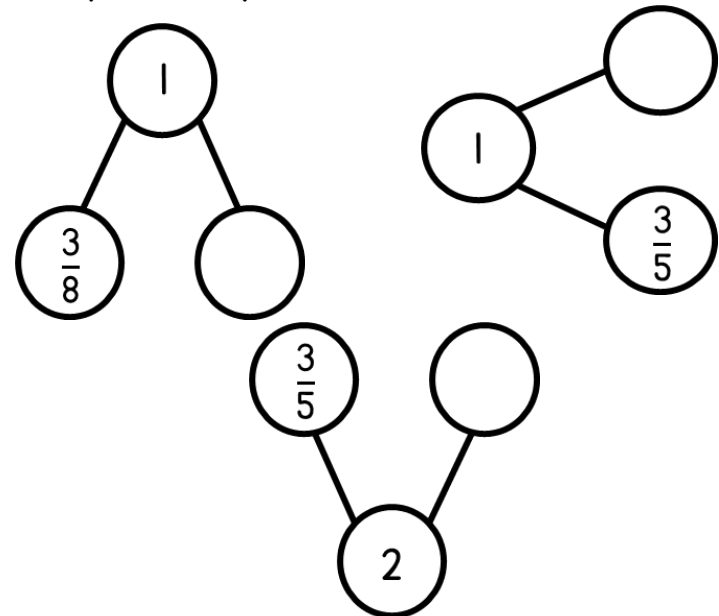


$$\frac{1}{3} = \frac{\square}{6} = \frac{\square}{12}$$

$$1 = \frac{\square}{12} = \frac{\square}{6} = \frac{\square}{3}$$

2 marks

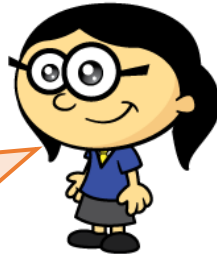
4 Complete the part-whole models.



3 marks

- 5 Annie is counting in quarters.

One quarter, two quarters, three quarters, four quarters, five quarters, six quarters...



What is the next fraction that Annie will say?
Circle all possible answers.

$\frac{7}{4}$

$\frac{4}{7}$

$1\frac{3}{4}$

Seven
Quarters

2 marks

- 6 Calculate.

$$\frac{12}{5} - \frac{4}{5} = \frac{\square}{\square}$$

$$\frac{4}{5} + \frac{3}{5} = 1 + \frac{\square}{5}$$

2 marks

- 7 A chocolate bar weighs 250 grams.

Liam eats $\frac{3}{10}$ of the chocolate bar.

Bella eats $\frac{7}{10}$ of the chocolate bar.

How many more grams does Bella eat than Liam?

_____ grams

2 marks

- 8 Complete the missing number.

$$\frac{1}{6} \text{ of } \square = 42$$

1 mark

Circle how confident you feel with fractions.

1

2

3

4

5

Not
confident

Very
confident