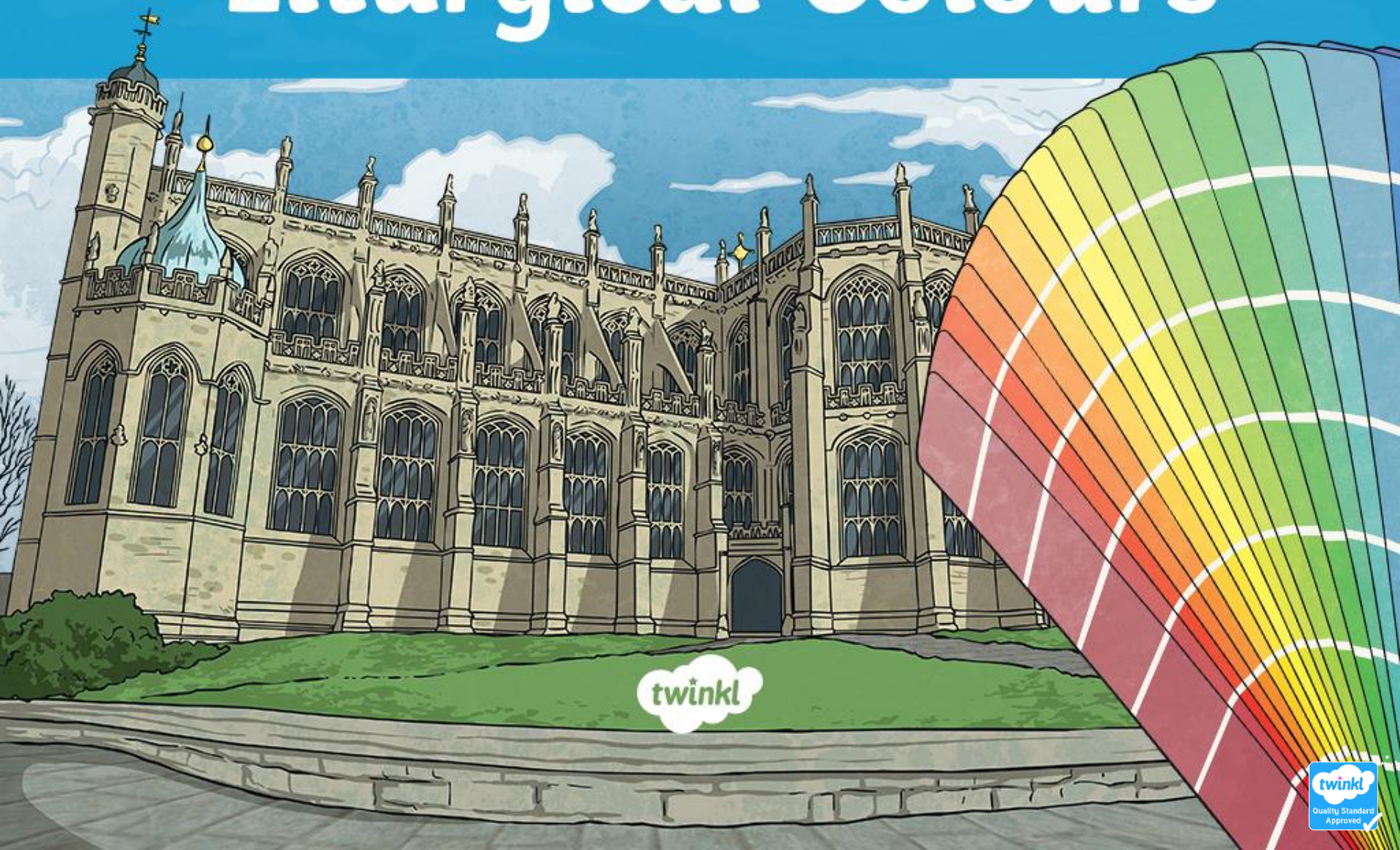


# Liturgical Colours



twinkl



# Symbolic Colours

Colours can be used to symbolise something else.

**Green** is often associated with being jealous. We used the expression 'green with envy' to describe someone who is feeling jealous.

The colour **red** is often connected to being angry. The expression 'red mist' describes someone getting really angry.

The colour **purple** is associated with royalty. This is because it used to be very expensive to make purple clothes.



# Church Calendar

Colours are an important part of some churches. Different colours are displayed at different times of the year, following the Christian calendar. These festivals include:

**Candlemas/The Presentation** – The festival that marks 40 days after Jesus' birth when his parents took him to the Temple. Candlemas is 2<sup>nd</sup> February.

**Shrove Tuesday** – Often known as 'Pancake Day', it is the day before Lent.

**Ash Wednesday** – The start of the festival of Lent. Lent remembers the forty days Jesus spent in the desert. It takes place in February, as does Shrove Tuesday.

# Church Calendar

**Holy Week** – Palm Sunday to Easter Sunday. Holy Week is a movable feast, it usually happens in March or April.

**Pentecost** – The festival that marks the arrival of God the Holy Spirit on earth. Pentecost is fifty days after Easter.

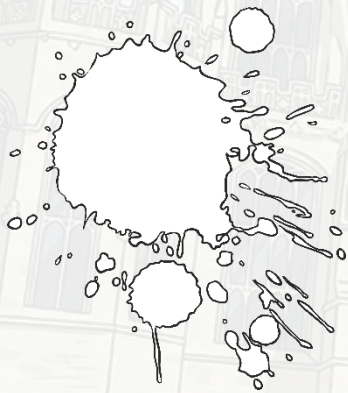
**Trinity Sunday** – The first Sunday after Pentecost, it celebrates the Christian idea of the Trinity which is God the Father, God the Son and God the Holy Spirit.

**All Saints' Day** - A day to honour special Christians from history called Saints. It is on 1<sup>st</sup> November.



# Colours

Click on a colour to find out when it is used in church.



# Colours in Church

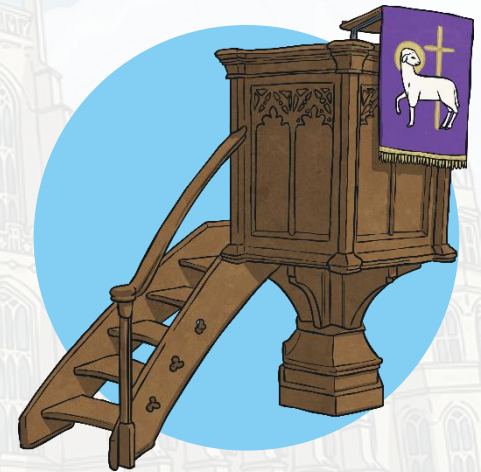
Colours are displayed in different areas in a church.  
Click on the picture to find out more.



Vestments –  
Robes worn by a priest.

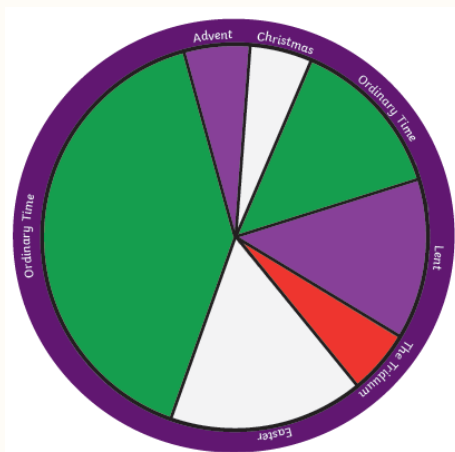


Cross  
(with a piece of  
material draped around it) –  
A symbol of Jesus' death on the cross.



Pulpit –  
Where the priest stands  
to read the Bible.

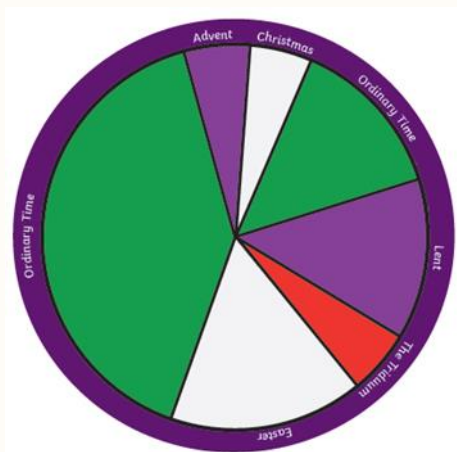




# Ordinary Time

When is 'Ordinary Time' in the Church calendar? What is it a time for?



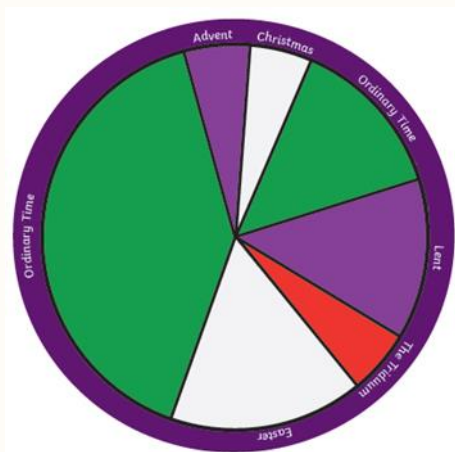


# Pentecost

When is 'Pentecost' in the Church calendar?  
What is it a time for?



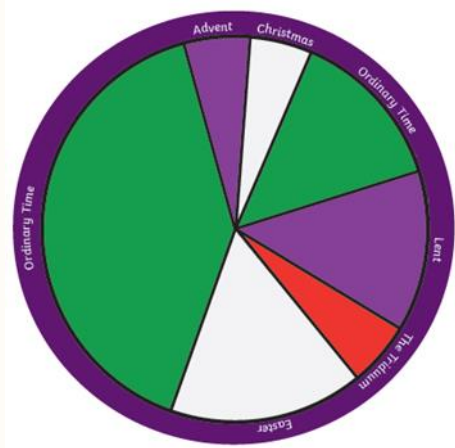




# Advent/Lent

When is 'Advent and Lent' in the Church calendar? What is it a time for?





# Easter/Christmas

What is it a time for?





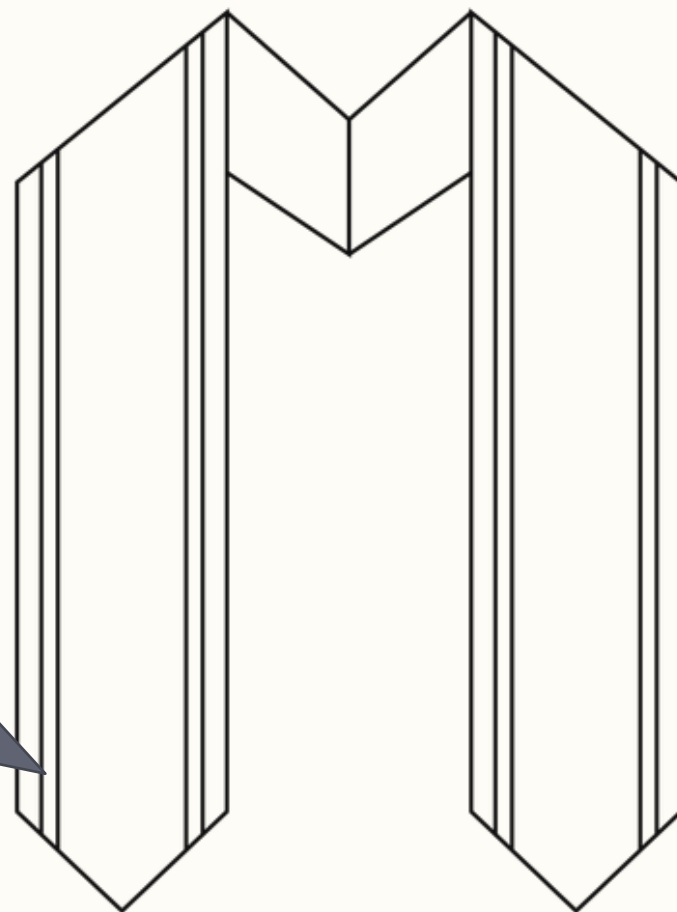
# Design your own 'stole' to be worn for a particular season in the church calendar.

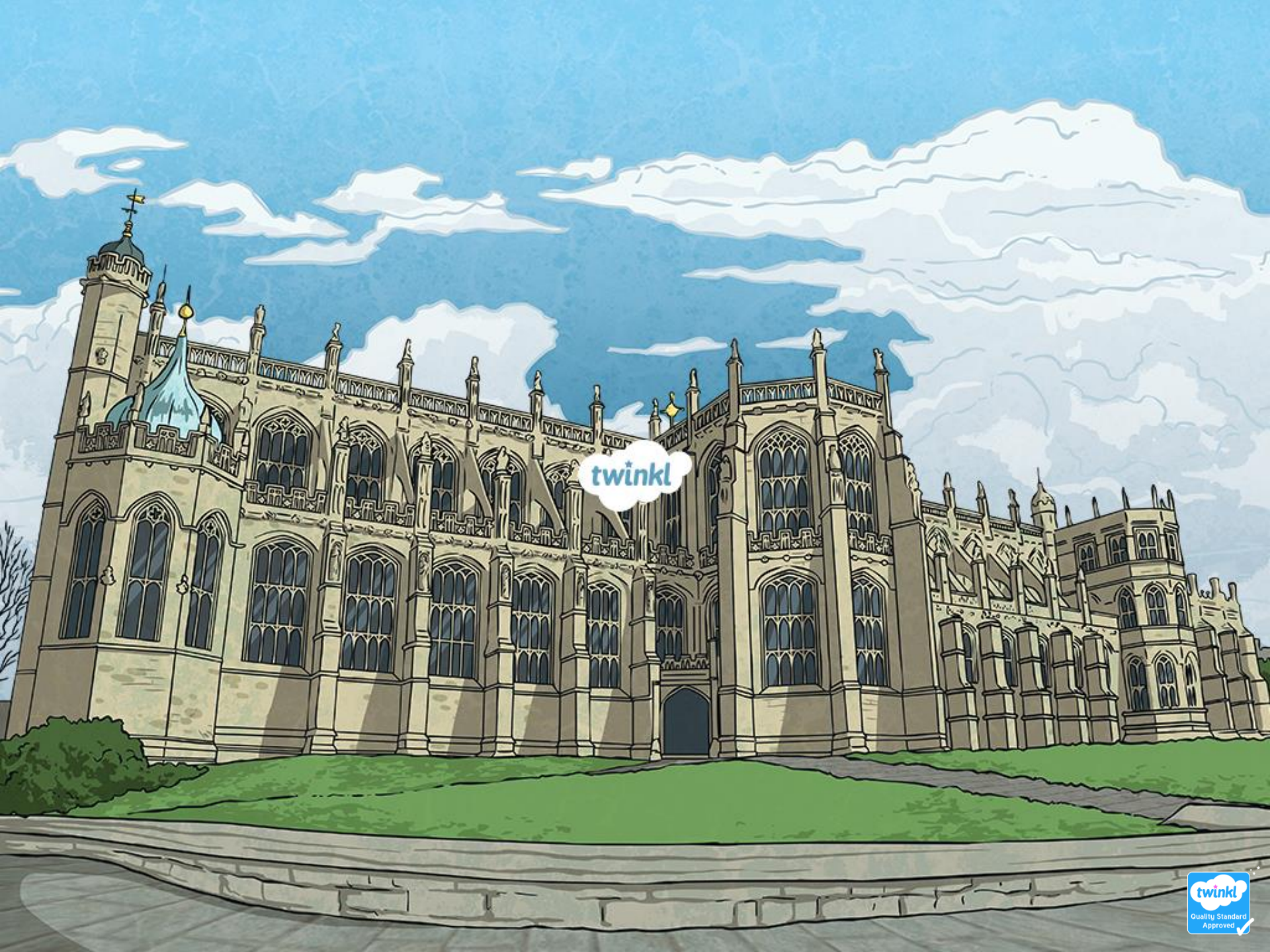
---

Choose a season from the church calendar using the information on the PowerPoint and design your own 'stole' for a vicar to wear during that season. Think about the colour that it needs to be and different symbols or words that could be used to represent that event in the Church. The 'stoles' on the slides previously may give you some help with ideas.

***I look forward to seeing your designs.***

EXTRA CHALLENGE: Those of you who like to be more creative and have the resources you could have a go at making a 'stole' like the ones displayed in the front entrance of our school





twinkl