

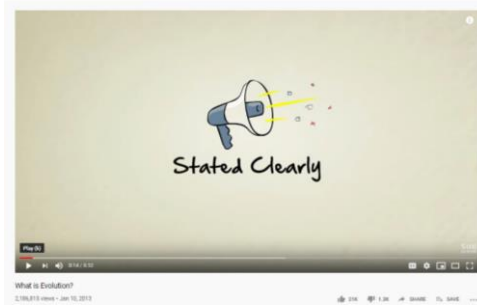
Topic : Evolution and Inheritance

Task 5:

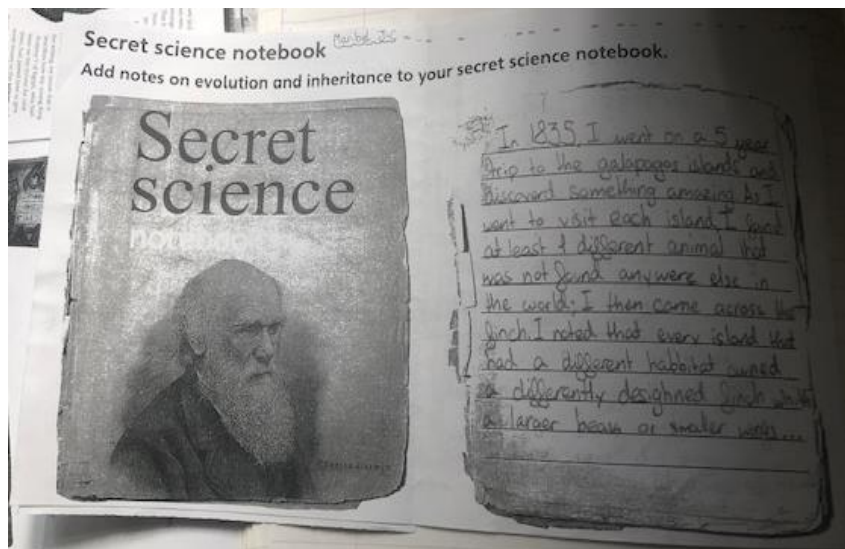
L.O -I can identify the key ideas of the theory of evolution by Charles Darwin

What is evolution? - watch video

<https://www.youtube.com/watch?v=GhHOjC4oxh8>



Charles Darwin set sail on board HMS Beagle. He would often write in his in a diary. I want you to write a diary entry as if you were Charles Darwin. You are to write down what you saw the time you were visiting the Galapagos Islands. You are to write down your scientific observations about the remarkable discovery about the Finch birds that you saw. Here are a few videos for you to watch but you will have to complete further research.



<https://www.youtube.com/watch?v=FKfyj7VuxFI>

<https://www.youtube.com/watch?v=4Dm7I7UOKBE>

